

Benchmark 2022

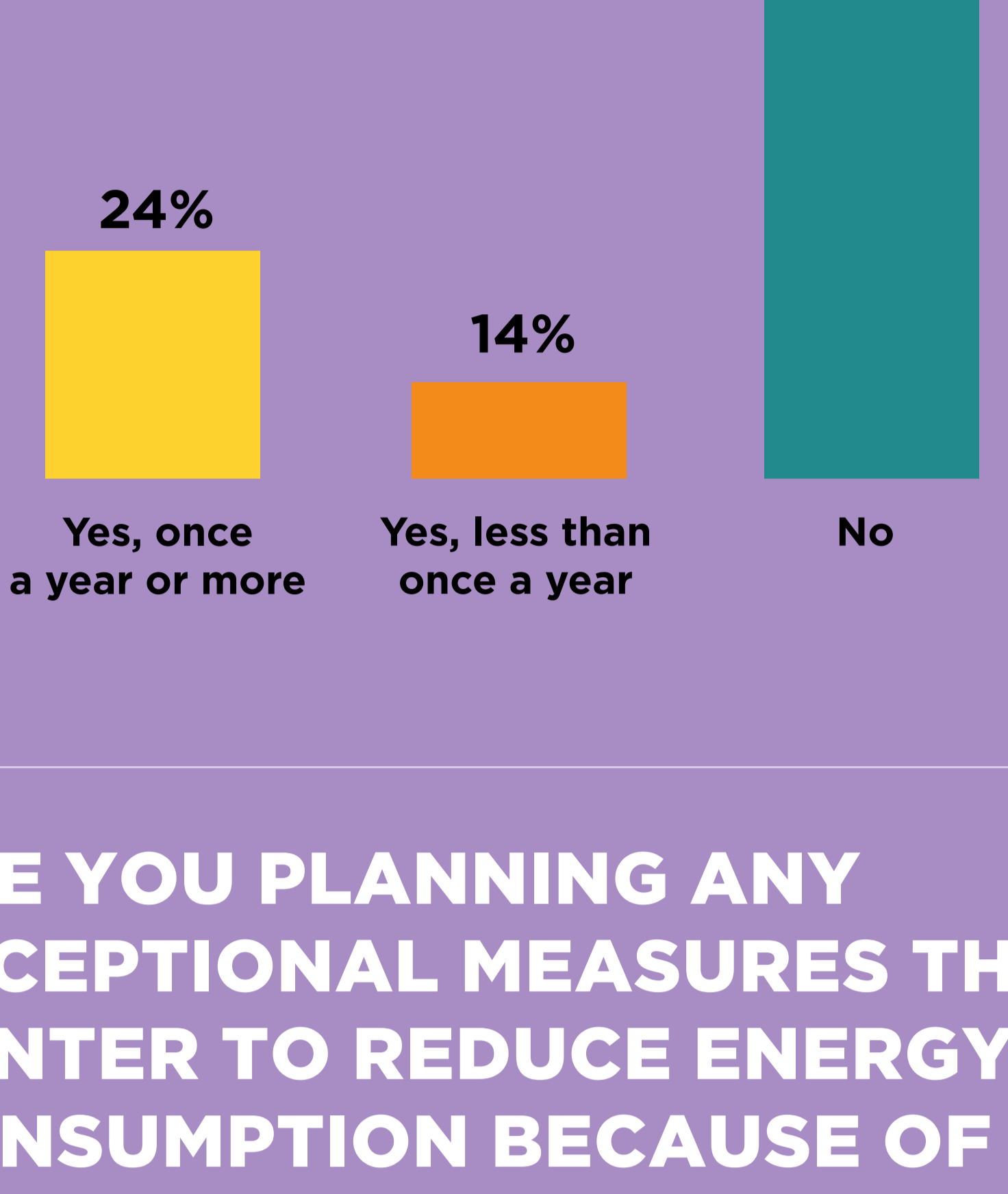
FACILITY MANAGEMENT AND ENVIRONMENTAL RESPONSIBILITY IN CENTRAL BANKS



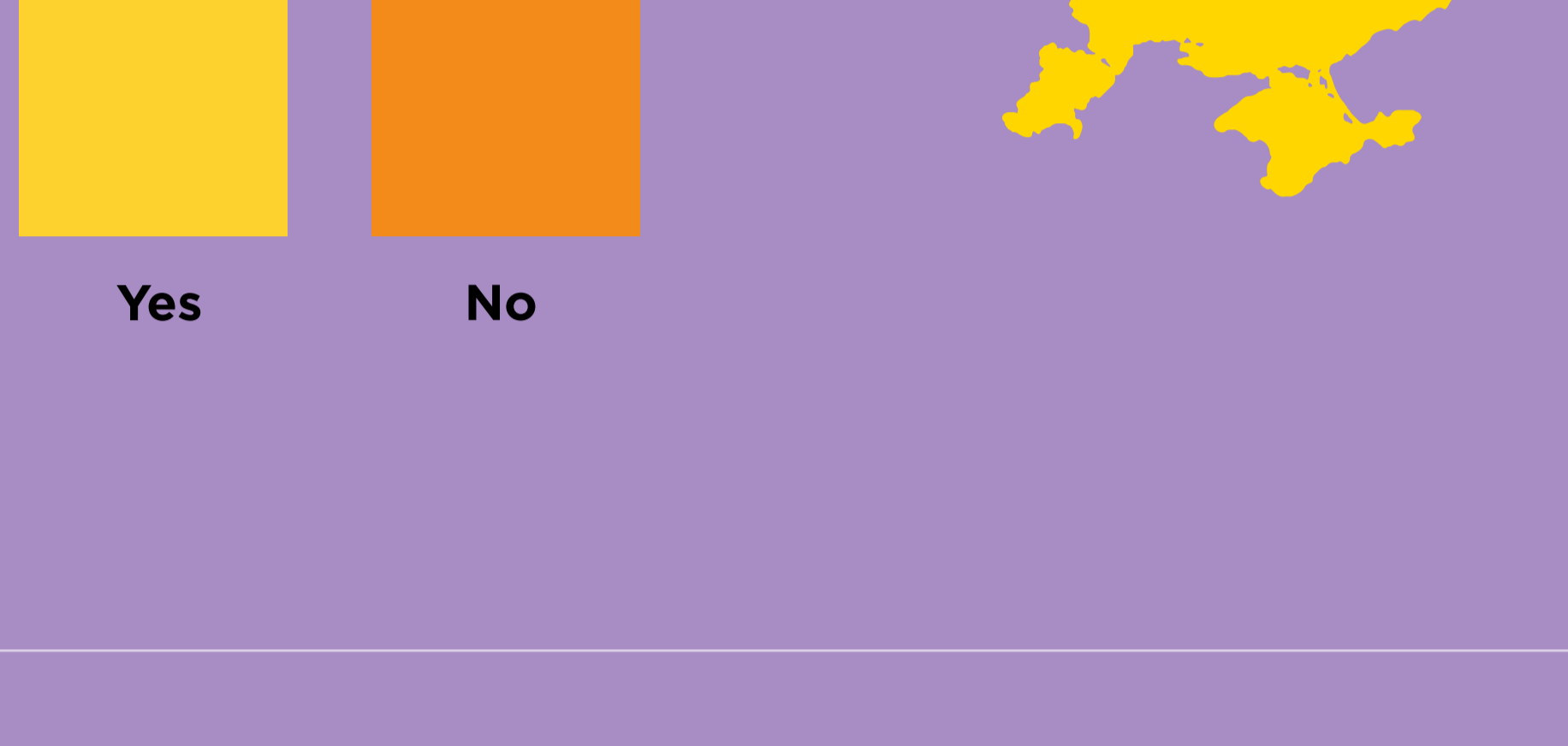
Participating countries

BULGARIA, BRAZIL, FRANCE, EGYPT, HAÏTI, ICELAND, INDONESIA, MADAGASCAR, MALTA, MOLDOVA, NEPAL, NIGERIA, THE PHILIPPINES, SAUDI ARABIA, SPAIN, TUNISIA, TÜRKIYE, VIETNAM

DO YOU PERFORM ENERGY AUDITS ON YOUR BANK'S REAL ESTATE ASSETS? IF SO, HOW OFTEN?



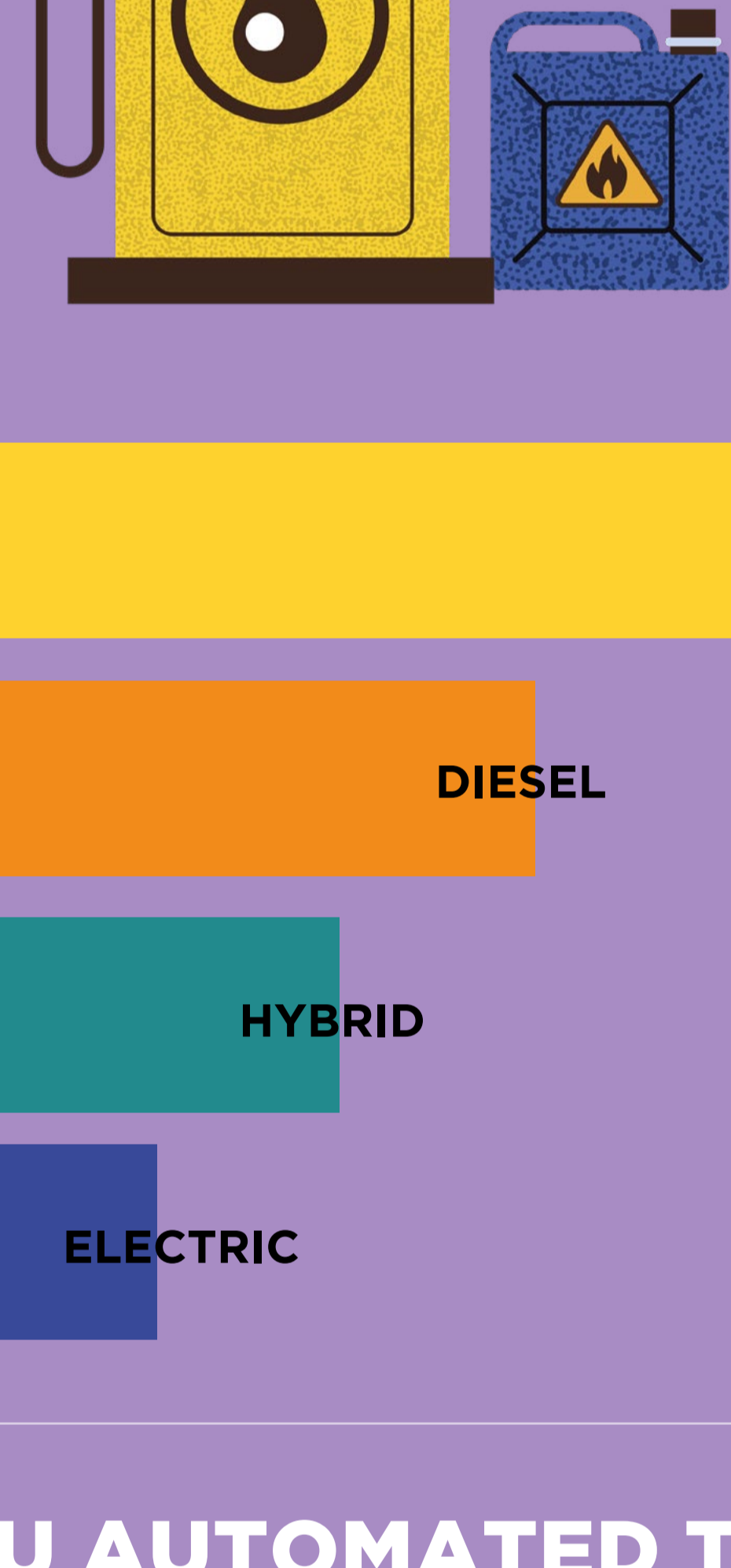
ARE YOU PLANNING ANY EXCEPTIONAL MEASURES THIS WINTER TO REDUCE ENERGY CONSUMPTION BECAUSE OF THE WAR IN UKRAINE?



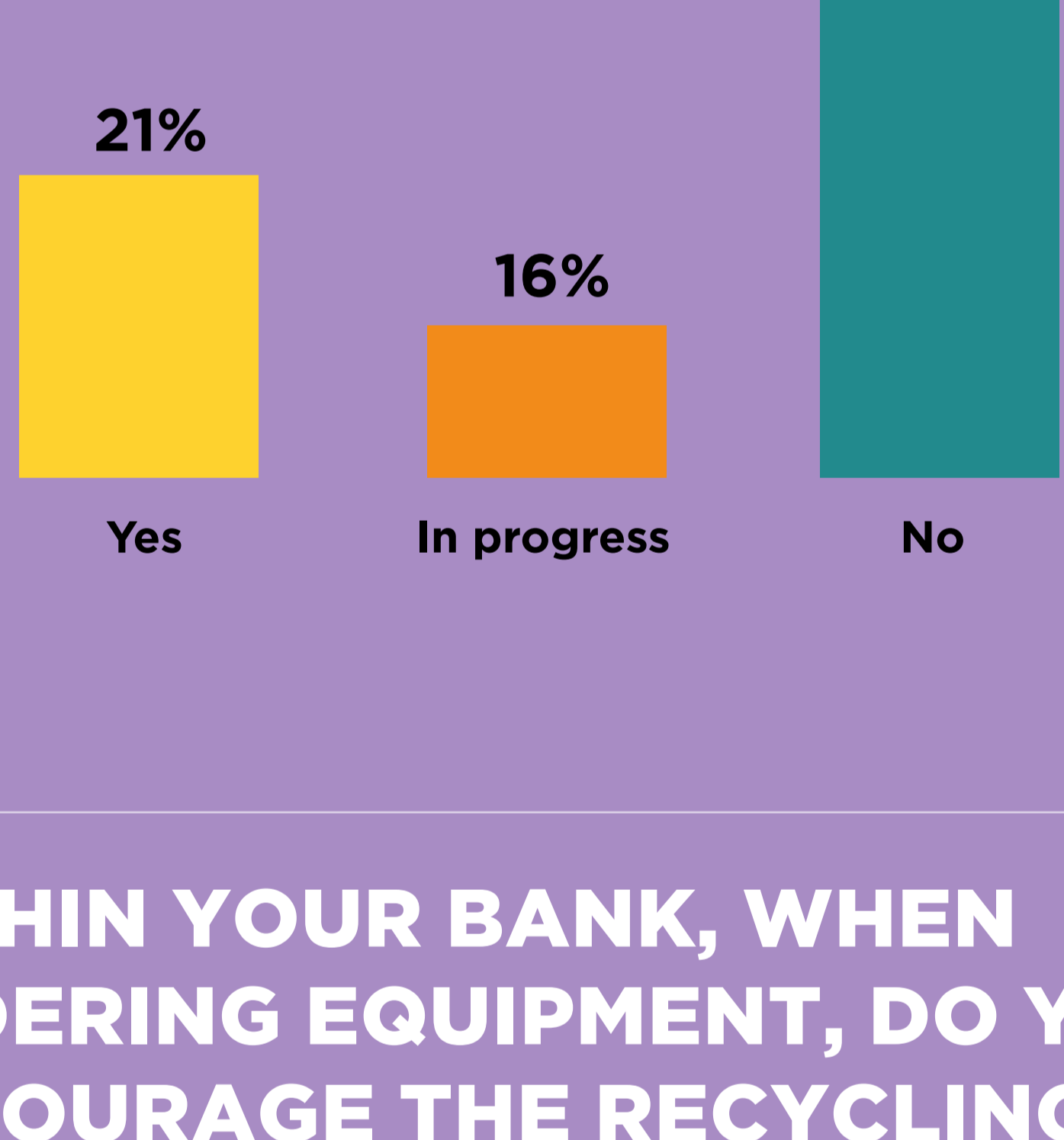
ARE YOU SUBJECT TO ANY GOVERNMENT OBLIGATIONS REGARDING ENERGY CONSUMPTION?



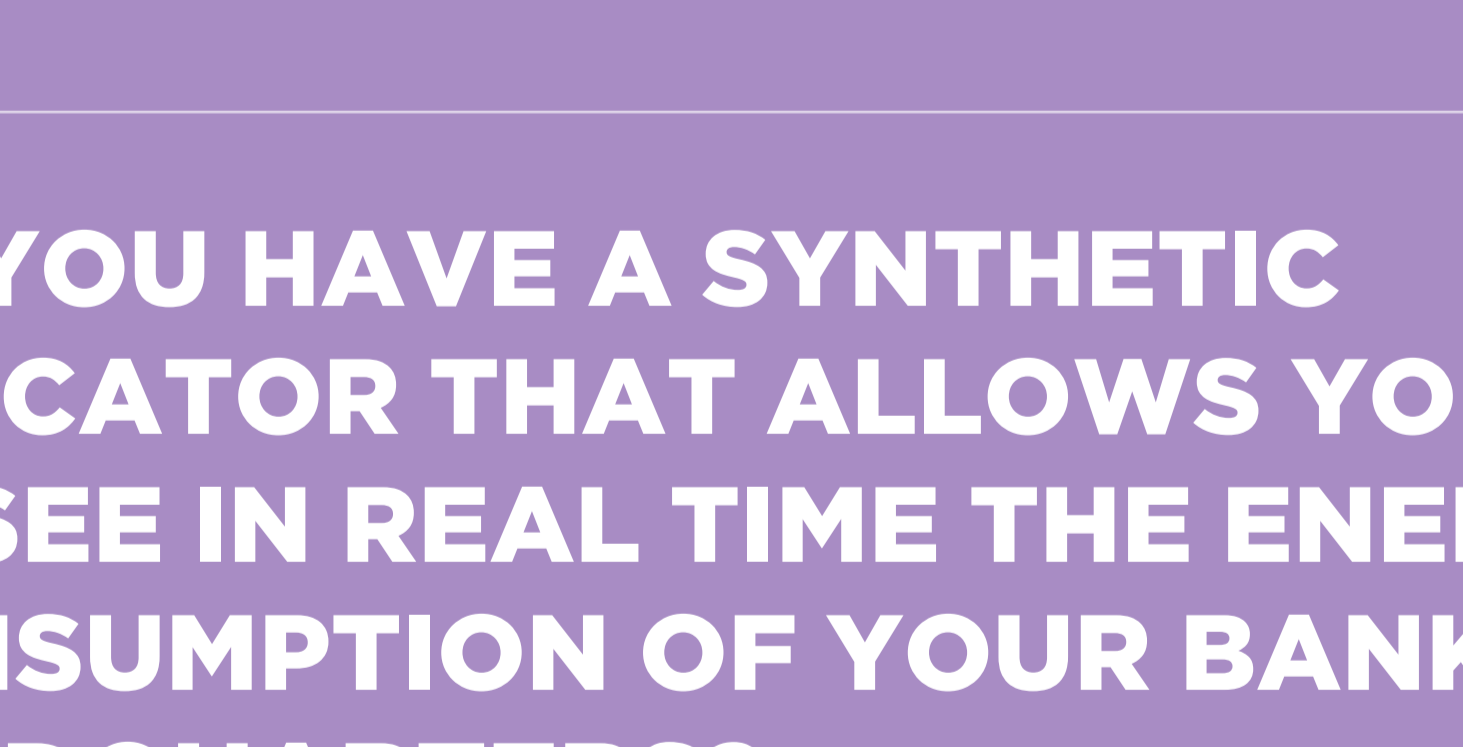
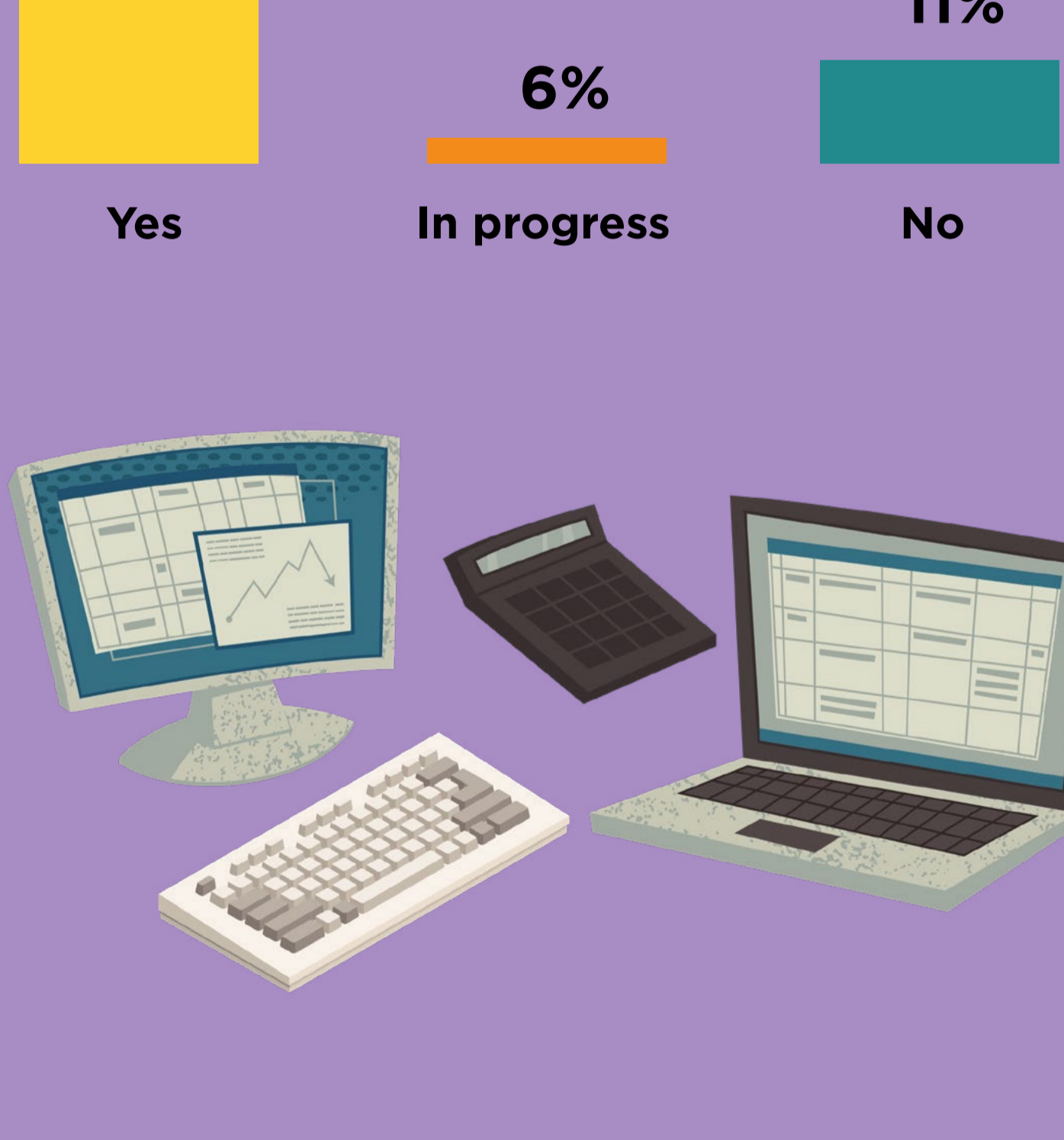
WHAT IS THE COMPOSITION OF YOUR CAR FLEET TODAY (GASOLINE, DIESEL, HYBRID, ELECTRIC)? SORT THE VEHICLE TYPES BY THE NUMBER OF VEHICLES IN YOUR BANK



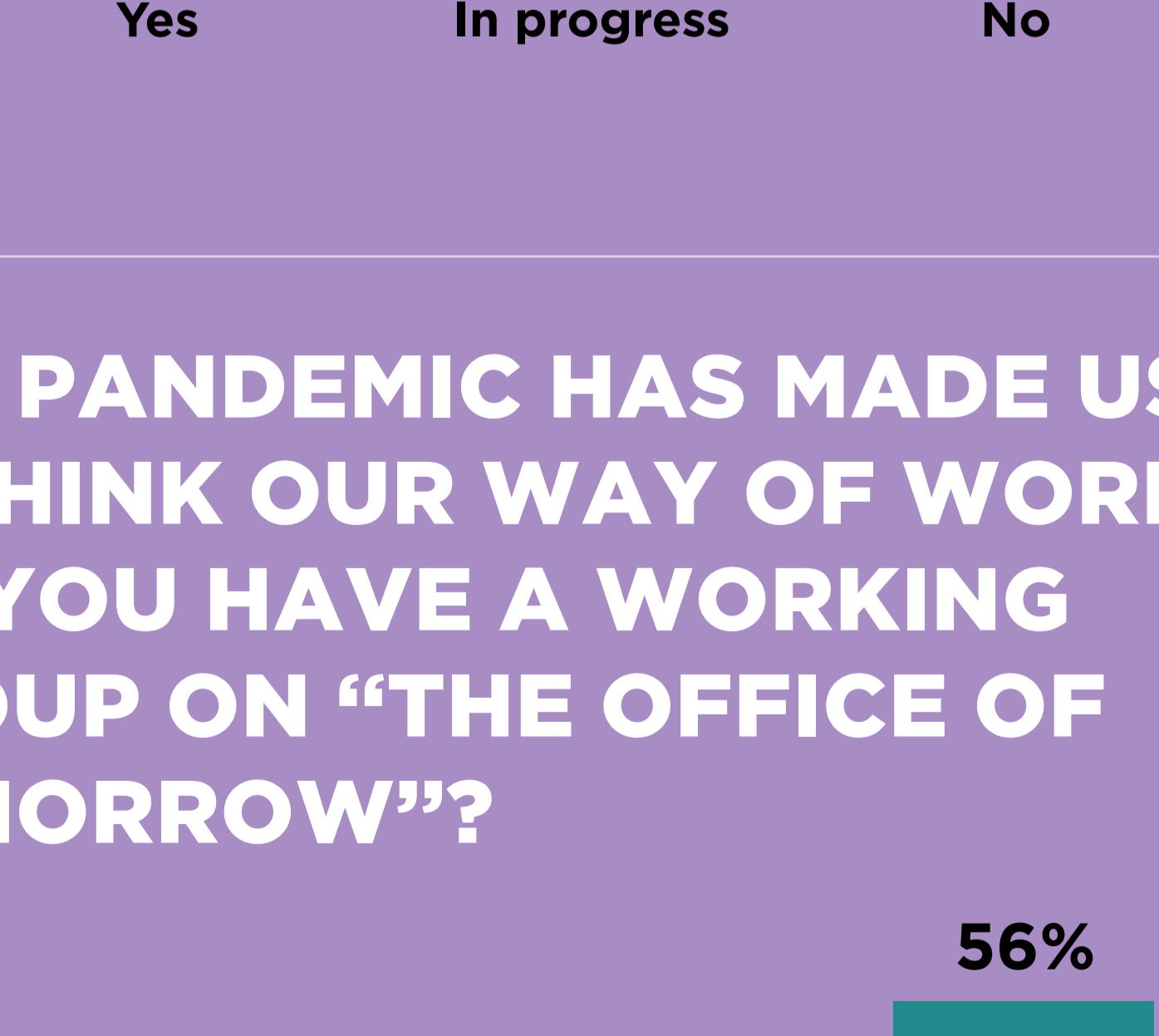
HAVE YOU AUTOMATED THE REPORTING OF YOUR FLEET INFORMATION (KM, LITERS...)?



WITHIN YOUR BANK, WHEN ORDERING EQUIPMENT, DO YOU ENCOURAGE THE RECYCLING OF OLD EQUIPMENT THAT IS STILL IN GOOD CONDITION?



DO YOU HAVE A SYNTHETIC INDICATOR THAT ALLOWS YOU TO SEE IN REAL TIME THE ENERGY CONSUMPTION OF YOUR BANK'S HEADQUARTERS?



THE PANDEMIC HAS MADE US RETHINK OUR WAY OF WORKING. DO YOU HAVE A WORKING GROUP ON "THE OFFICE OF TOMORROW"?



DATA CONTAINED IN THIS DOCUMENT ARE CALCULATED FROM PARTICIPANTS' RESPONSES TO A QUESTIONNAIRE CIRCULATED PRIOR TO THE CONFERENCE. NO ATTEMPT HAS BEEN MADE TO VERIFY ACCURACY. DEFINITIONS AND METHODOLOGIES DIFFER ACROSS JURISDICTIONS.

